

## SOCIETY FLORIDA FASHION &amp; ESSENTIALS

## Funding Arts Broward Celebrates 20 Years

Funding Arts Broward (FAB), a non-profit volunteer-based organization committed to preserving and cultivating the arts, recently celebrated its 20<sup>th</sup> anniversary with a reception honoring founding member and benefactor Francie Bishop Good and other founding members at Broward Center for the Performing Arts.

"We're thrilled to celebrate 20 incredible years of cultivating the creative momentum in Broward County," said Ed Hashek, president of FAB. "From our humble beginnings of a few founding arts advocates to a dedicated membership that is now almost 200 strong, we're thankful for our champions and corporate patrons who fully support our mission. As we enter our new season, we're looking forward to amplifying the voices of our diverse cultural grantees and uniting the community to make 2023 performances and educational initiatives even more meaningful."

The elegant evening began with a cocktail reception

in the Peck Courtyard followed by a celebration and program in the Mary Porter Ballroom.

Guest speakers included Kelley Shanley, president and CEO of Broward Center for the Performing Arts and MC Darius Daughtry, founder of the Art Prevails Project. The Fort Lauderdale Children's Theatre also gave a special performance to commemorate the evening.

FAB is supported by membership whose dues go toward grants that preserve and cultivate the arts in Broward County. FAB is also supported by its corporate partners BBX Capital, New River Fine Arts, Northern Trust, PNC Bank, Weston Jewelers, Pallant Insurance Agency, Casa D'Angelo, Tim Singer Realty and Twig, Trade and Tribunal.

To learn more about FAB including how to become a member or support the arts, visit [www.fundingartsbroward.org](http://www.fundingartsbroward.org) or



From Left: Mary Riedel, Connie Folz, Francie Bishop Good, Drazia Simon, Jessica Oleson and Francine Rozencaig

email [fundingartsbroward@gmail.com](mailto:fundingartsbroward@gmail.com).

Funding Arts Broward, (FAB) is a non-profit volunteer-based organization committed to preserving and cultivating the arts in Broward County, Florida. FAB's mission is to support, sustain and enrich the arts in our community. Since its inception in 2003, the organization has granted over \$4.5 million to the local arts community.

## Broward Education Foundation Collects \$625,000 in School Supplies

Businesses, community leaders, partners and the public generously came together to have the largest ever impact ever in donating school supplies and funding to students and teachers in Broward County so they could kick off the school year ready for success.

Through its annual School Supply Drive, Broward Education Foundation, the charitable organization dedicated to serving students and teachers in Broward County Public Schools, received financial contributions and donations of essential school supplies valued at \$625,126, an impressive average of \$125,025 per week over the five-week campaign.

"It really took a village to ensure



Debra Hixon and Scottie Walker



Jacqueline Richards de Verteuil, Wesley Anne Brinkhurst, Shedrick Dukes, Alex Price, Ric Green, Jeanne McIntyre, Sue Colton, David Gianello, James Knapp, Shea Ciriago and Richelle Kubsch

our success," said Shea Ciriago, CEO of Broward Education Foundation. "With nearly 76 percent of children in Broward County Public Schools living in poverty, we remain committed to meeting the shifting needs in education and are incredibly grateful for the many community partners and individuals who contributed to this campaign, the most successful in our 40-year history."

To help equip students and teachers with the necessary tools to thrive during the 2022-23 school year, Broward Education Foundation tapped every available resource from Publix's Tools for Schools point-of-sale donation program to companies pledging to support the Adopt-A-School program. Office Depot's nationwide *Start Proud!* program donated 1,000 backpacks filled with school supplies for elementary school students at two Broward County Public Schools.

## Symphonia Presents "Inspired Naturally" Season

The Symphonia, South Florida's premier chamber orchestra, will present the second concert in its 'Inspired, Naturally' season on Sunday, Dec. 4th at 3 p.m. at Roberts Theater at Saint Andrew's School in Boca Raton. Each concert within the series is inspired by one of the earth's natural elements, and the theme for this performance is 'EARTH.' Alastair Willis will be principal conductor and Kinman Azmeh will be the clarinet soloist.

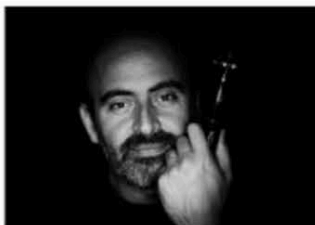
This concert will take in all the wonders of the Earth. Beginning at Fingal's Cave off the west coast of Scotland with Mendelssohn's evocative Hebrides Overture, The Symphonia will begin with a mesmerizing visit to Syria with internationally renowned clarinetist and composer Kinan Azmeh, and conclude with 'Terra Nostra,' the award-winning multimedia symphony by Christophe Chagnard that combines stunning visuals with the power of symphonic music and explores the impact and challenges of climate change.

'Inspired Naturally' was inspired by *Terra Nostra*, an award-winning multimedia symphony by Christophe Chagnard and produced by Earth

Creative that combines visuals with the power of symphonic music and explores the impact and challenges of climate change. The film will serve as the backdrop for The Symphonia's December concert.

Information on flex-subscriptions and single concert tickets and programs is available at [thesymphonia.org](http://thesymphonia.org), by calling 561-376-3848, or by emailing [tickets@thesymphonia.org](mailto:tickets@thesymphonia.org).

The mission of The Symphonia is to inspire, educate and engage the lives of our diverse South Florida community through extraordinary musical experiences. Founded in 2004 and recognized as the region's premier chamber orchestra, The Symphonia's annual concert series features a repertoire blending classic and contemporary works, showcasing compositions from diverse composers that can best be brought to life by a chamber-size ensemble.



Kinman Azmeh